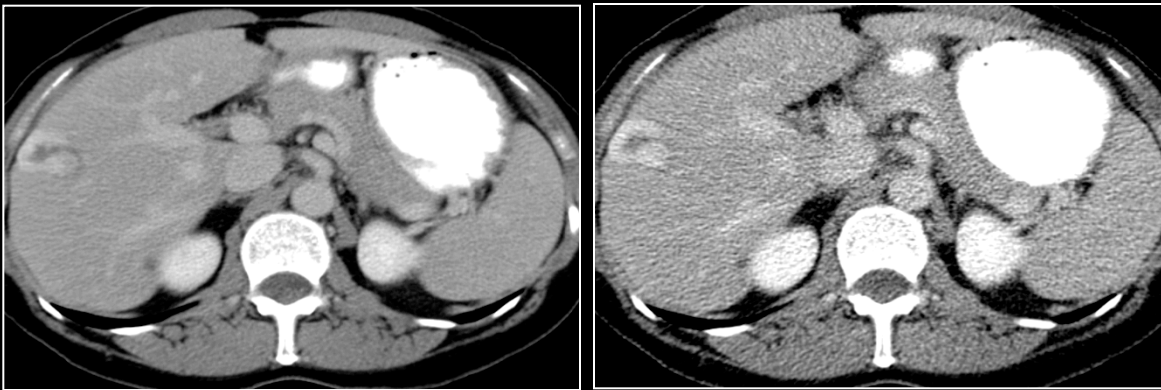


Web Chapter 2

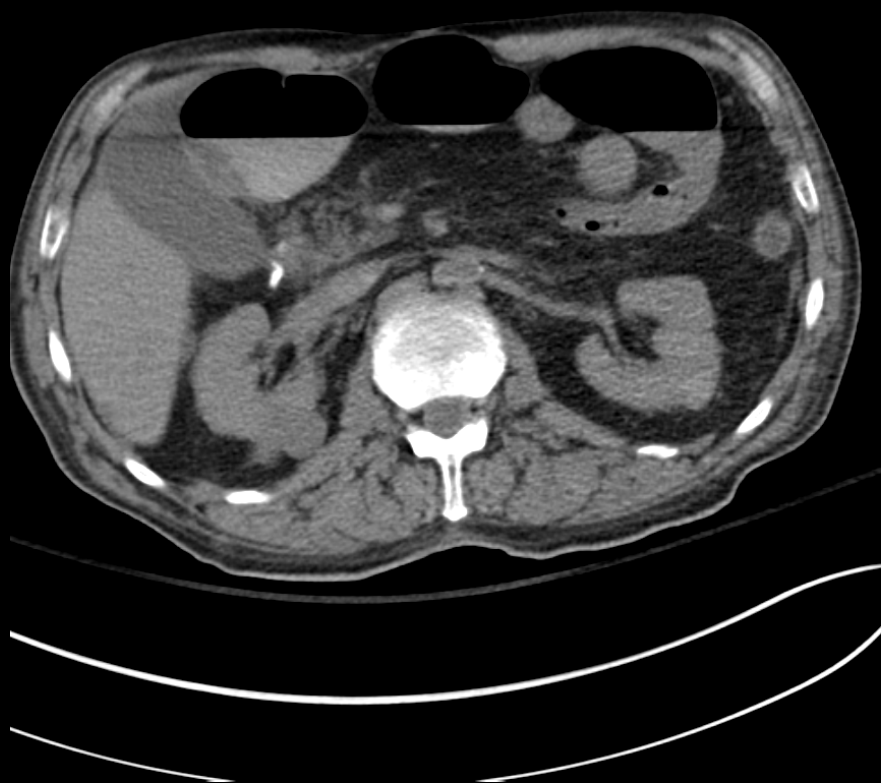
Image Gallery: Lesion detection on low dose abdominal CT

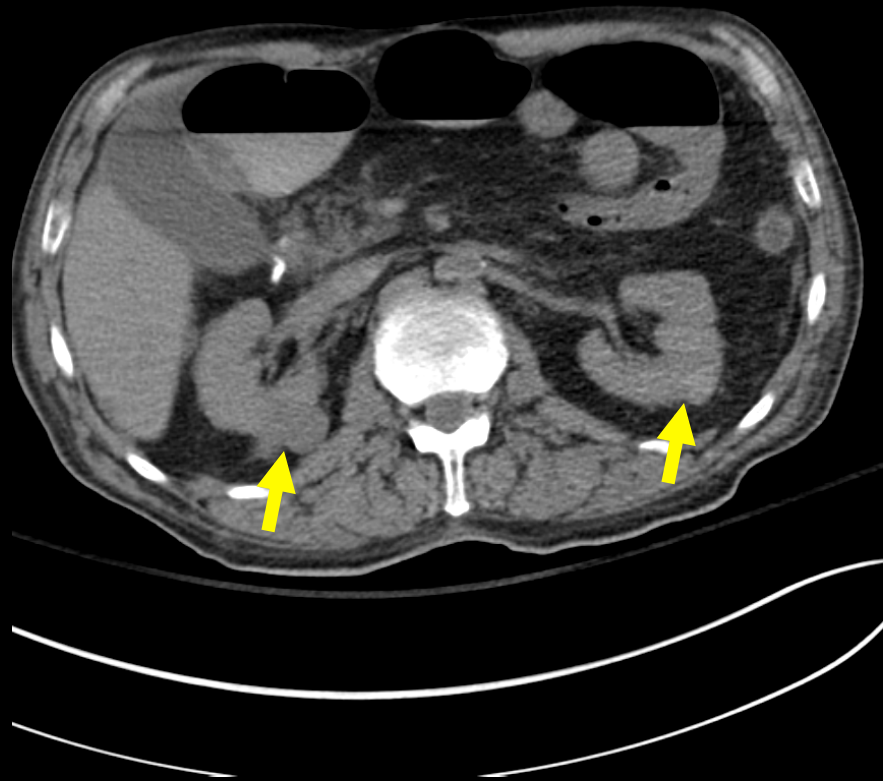


Sarabjeet Singh, MD
Mannudeep K. Kalra, MD
**James Stone, MD*
**Eugene J. Mark, MD*
James H. Thrall, MD

*Department of Radiology and *Department of Pathology*
Massachusetts General Hospital
Harvard Medical School, Boston

Do you see any abnormal findings in this transverse CT image?





Do you see left hemorrhagic renal cyst and right simple renal cyst?

Do you see any additional findings on higher dose images?

Image A

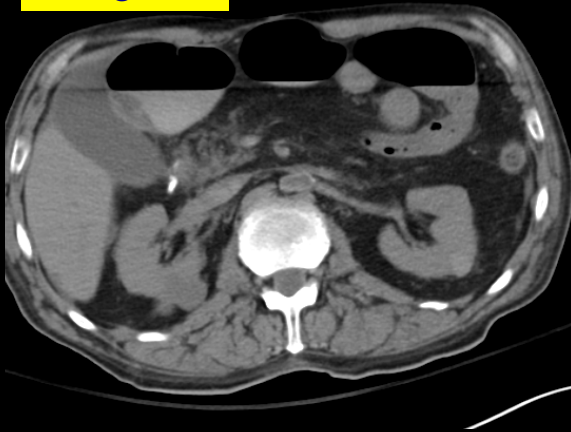


Image B

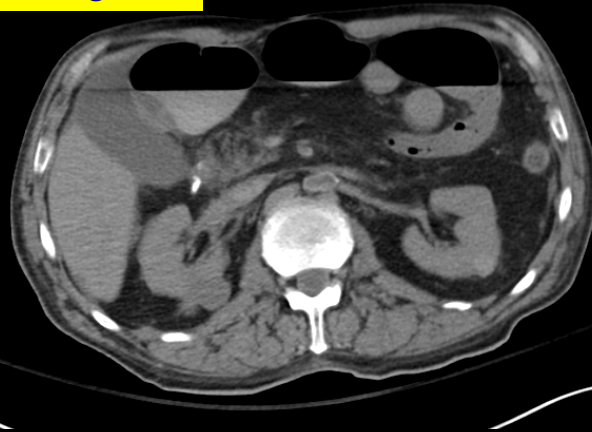


Image C

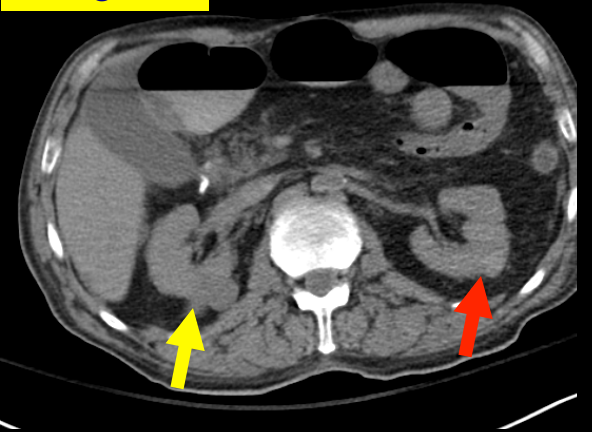
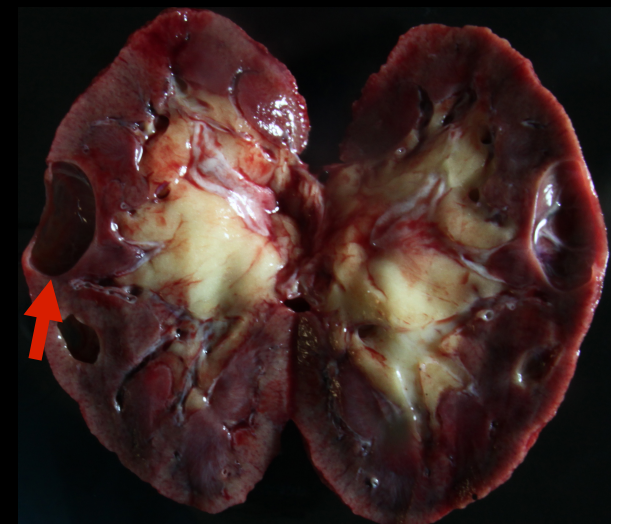


Image A	Image B	Image C
180 mAs	100 mAs	50 mAs
CTDIvol: 23.7 mGy	13.5 mGy	6.7 mGy

Left hemorrhagic renal cyst
and right simple renal cyst



Do you see any abnormal findings in this transverse CT image?





Do you see ascites and nodular liver?

Do you see any additional findings on higher dose images?

Image A

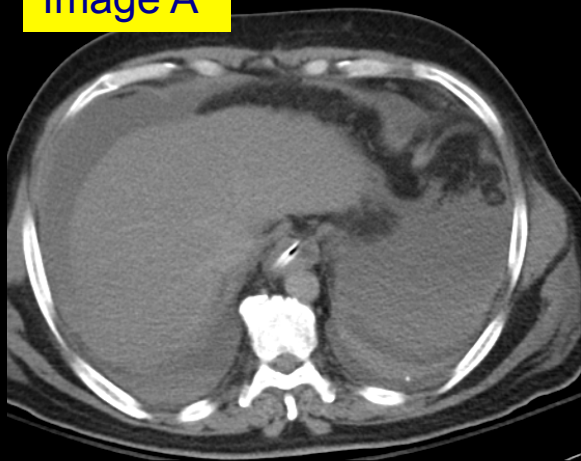


Image B

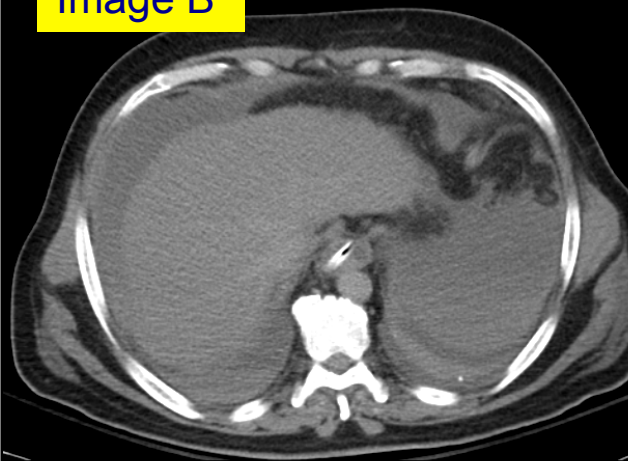


Image C



Image D

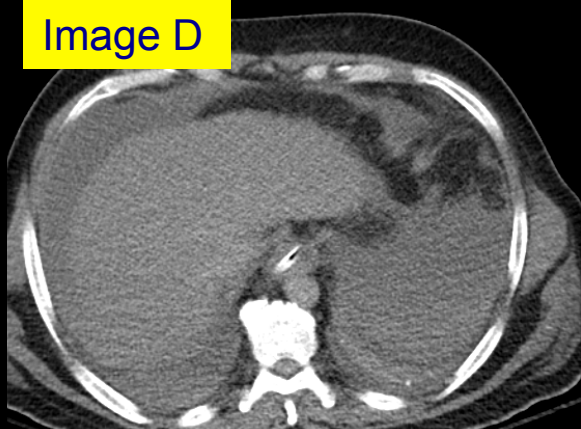
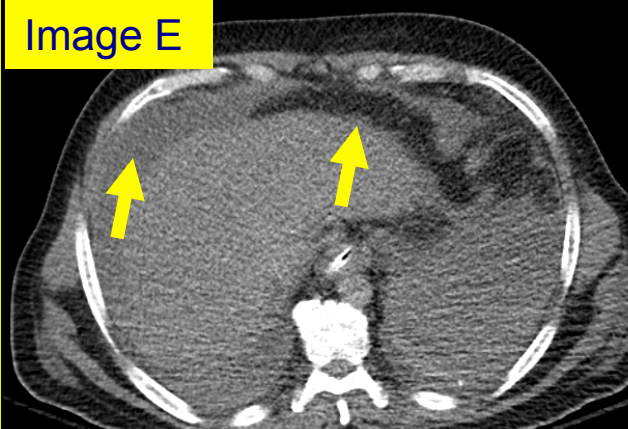


Image E

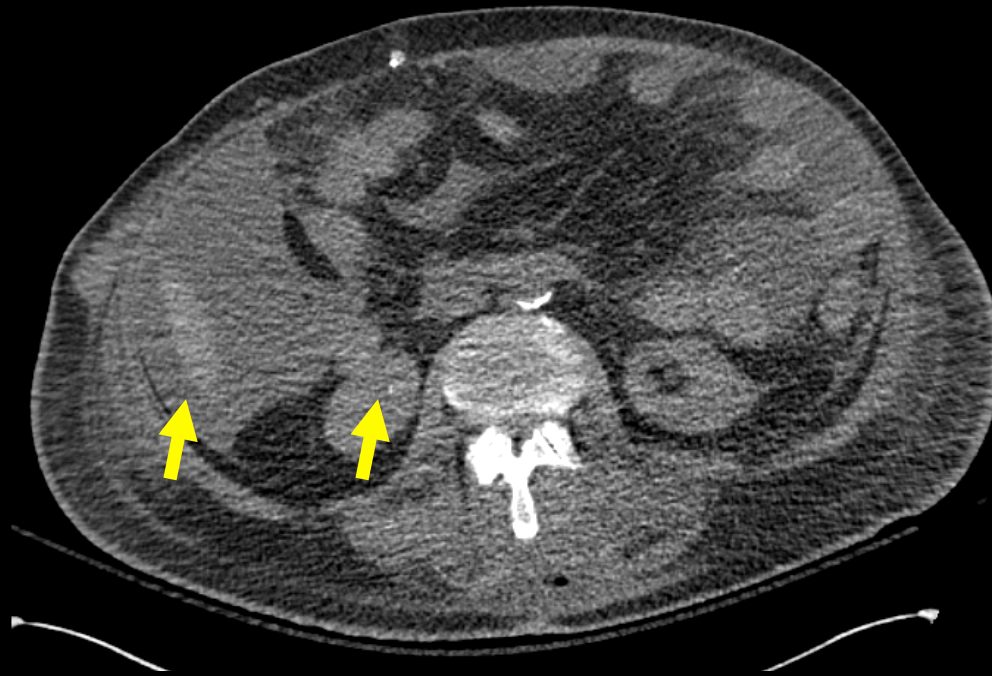


Nodular liver and ascites

Image A	Image B	Image C	Image D	Image E
140 kVp	120 kVp	120 kVp	120 kVp	120 kVp
303 mAs	350 mAs	200 mAs	100 mAs	50 mAs
CTDIvol: 29.7 mGy	23.7 mGy	13.7 mGy	6.7 mGy	3.4 mGy

Do you see any abnormal findings in this transverse CT image?





Do you see ascites and tiny right renal stone?

Do you see any additional findings on higher dose images?

Image A

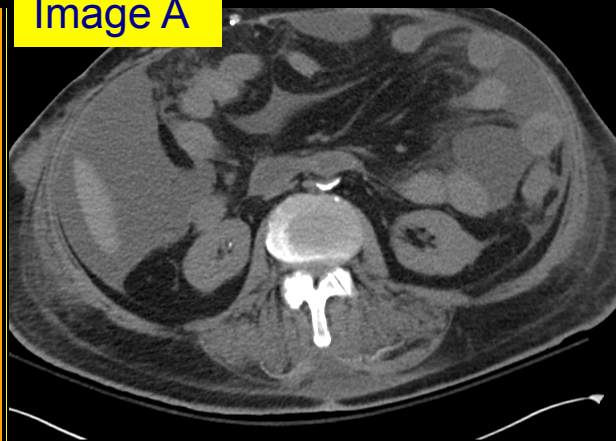


Image B

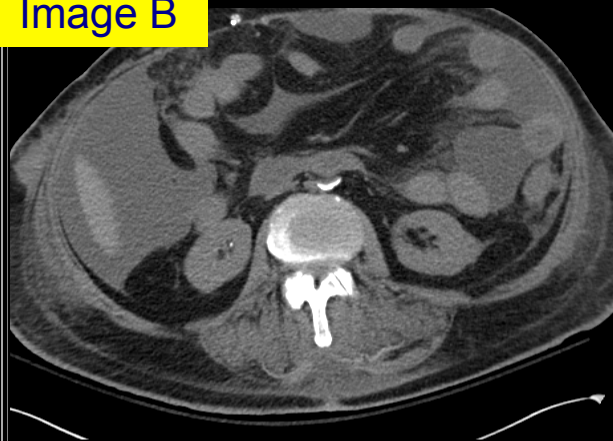


Image C

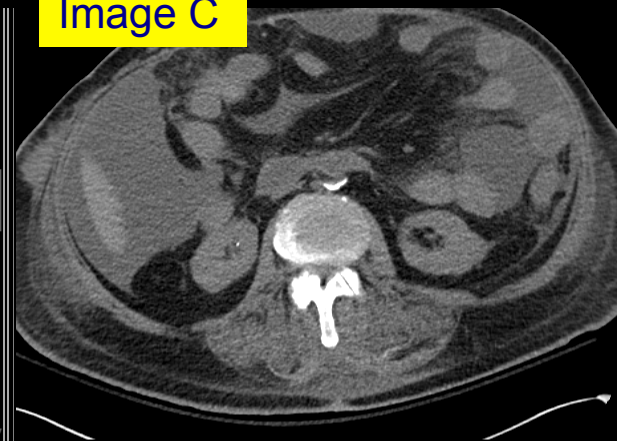


Image D

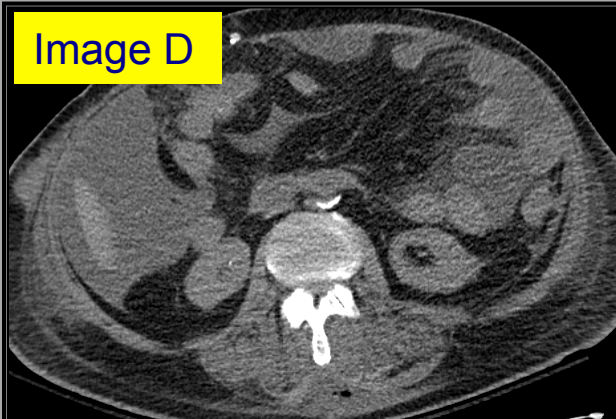
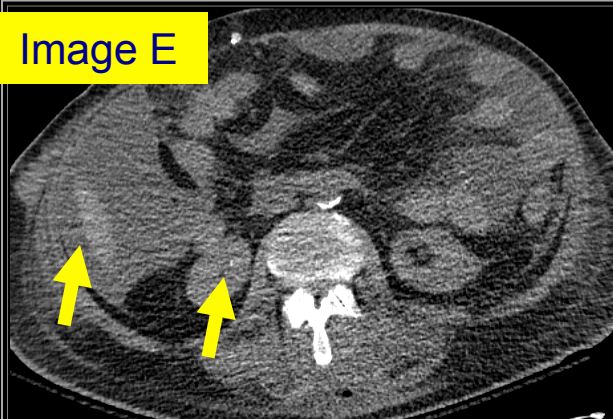


Image E

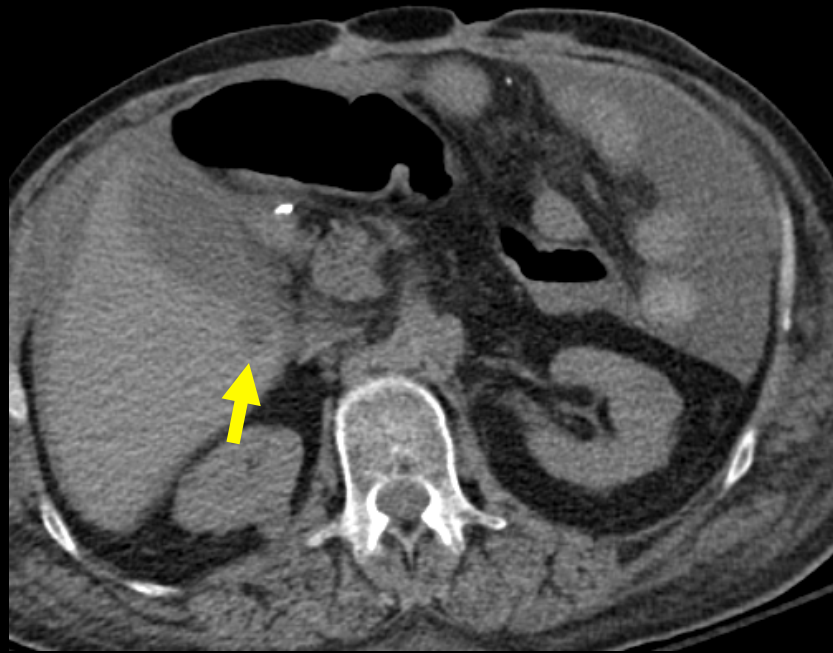


Renal stone and ascites

Image A	Image B	Image C	Image D	Image E
140 kVp	120 kVp	120 kVp	120 kVp	120 kVp
303 mAs	350 mAs	200 mAs	100 mAs	50 mAs
CTDIvol: 29.7 mGy	23.7 mGy	13.7 mGy	6.7 mGy	3.4 mGy

Do you see any abnormal findings in this transverse CT image?





Do you see a low attenuation liver lesion?

Do you see any additional findings on higher dose images?

Image A

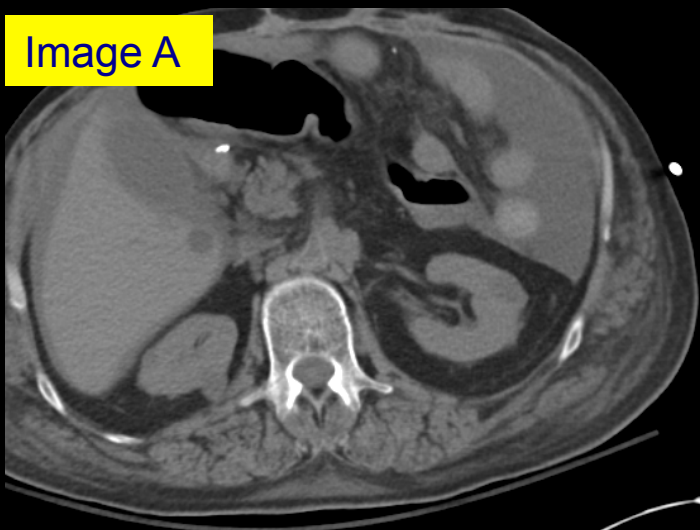
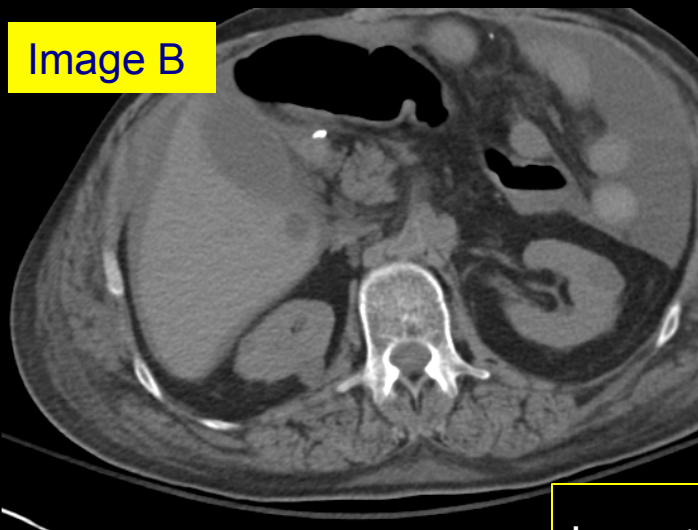


Image B



Low attenuation liver lesion

Image C

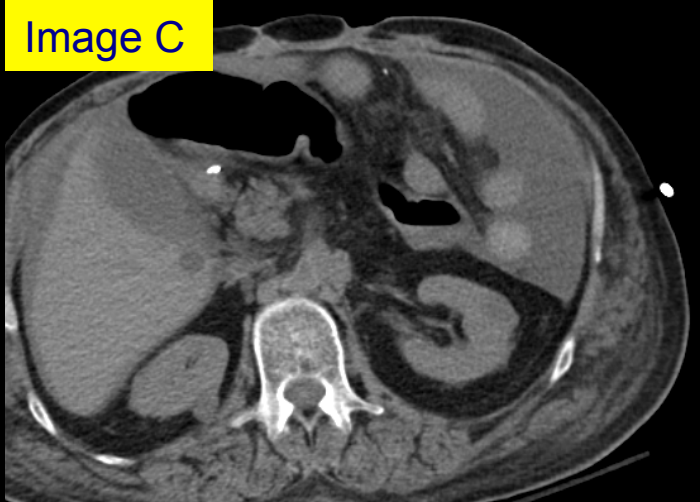


Image D

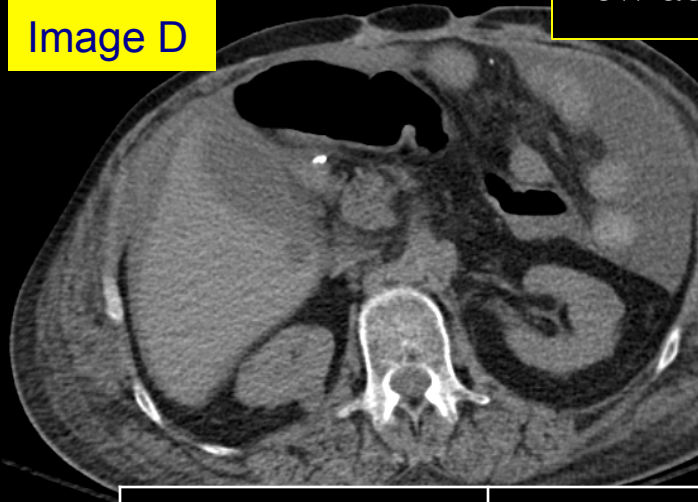


Image A	Image B	Image C	Image D
140 kVp	120 kVp	120 kVp	120 kVp
303 mAs	350 mAs	200 mAs	100 mAs
CTDIvol: 29.7 mGy	23.7 mGy	13.7 mGy	6.7 mGy

Do you see any abnormal findings in this transverse CT image?





Do you see multiple liver metastasis, left pleural effusion, pericardial effusion?

Do you see any additional findings on higher dose images?

Image A

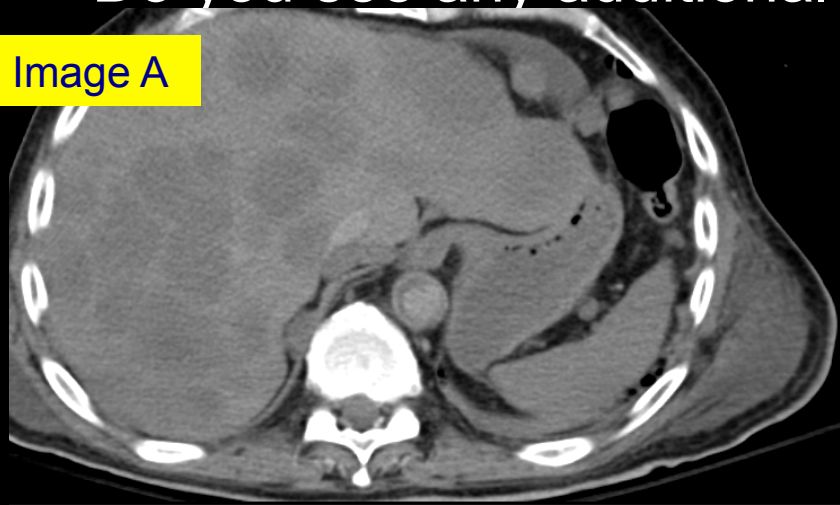


Image B

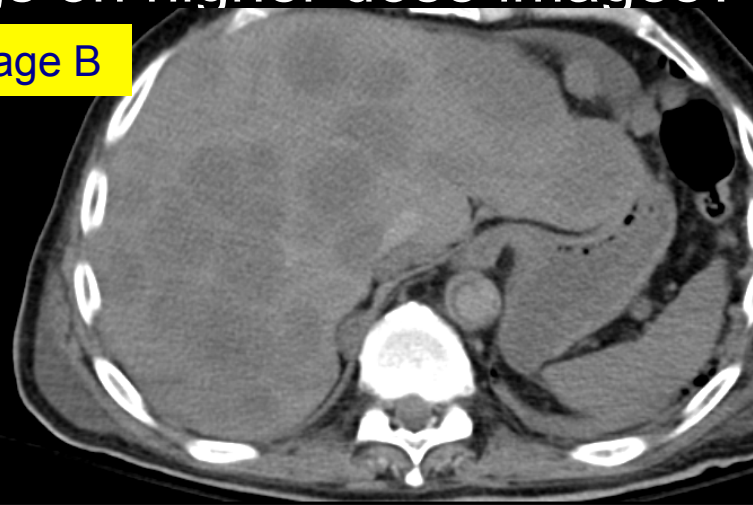


Image C



Image D



multiple liver mets, left pleural effusion, pericardial effusion

Image A	Image B	Image C	Image D
140 kVp	120 kVp	120 kVp	120 kVp
303 mAs	350 mAs	200 mAs	100 mAs
CTDIvol: 29.7 mGy	23.7 mGy	13.7 mGy	6.7 mGy

Do you see any additional findings on higher dose images?

Image A

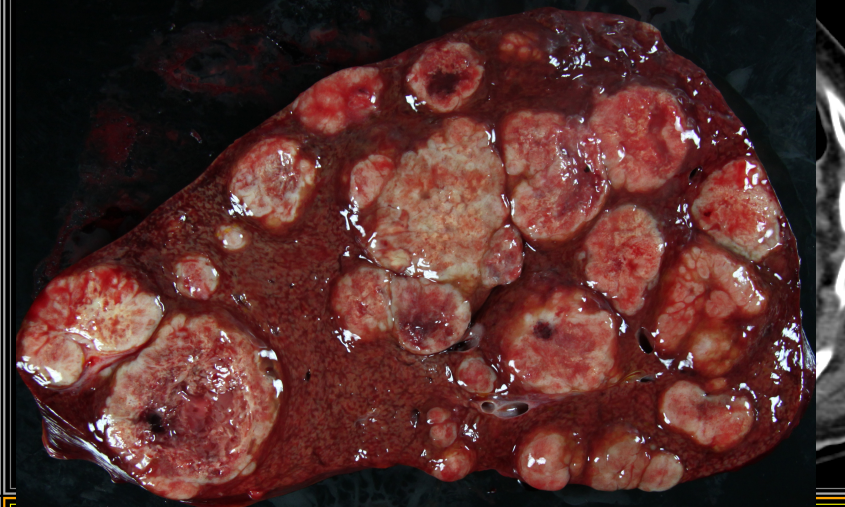
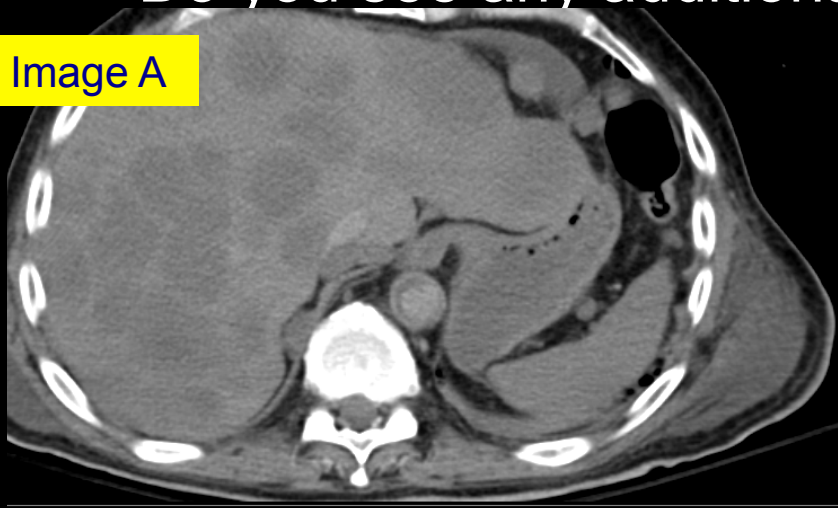


Image C

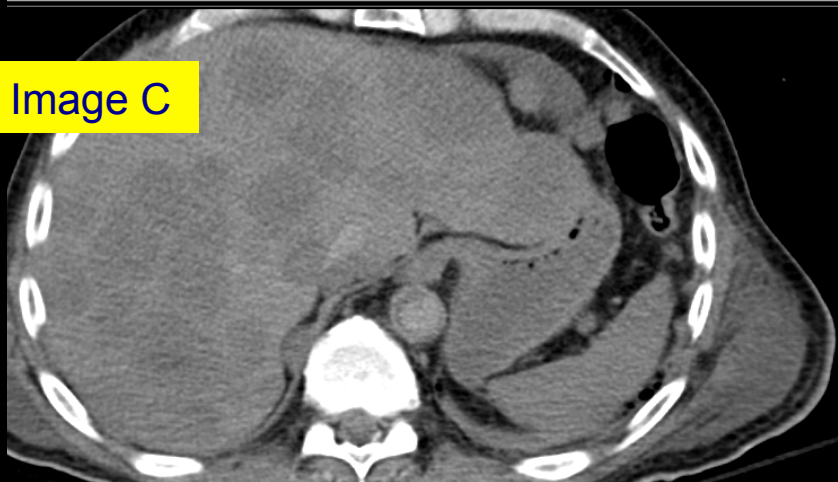


Image D



multiple liver mets, left pleural effusion, pericardial effusion

Image A	Image B	Image C	Image D
140 kVp	120 kVp	120 kVp	120 kVp
303 mAs	350 mAs	200 mAs	100 mAs
CTDIvol: 29.7 mGy	23.7 mGy	13.7 mGy	6.7 mGy

Do you see any abnormal findings on this transverse CT image?





Do you see calcified fibroid of the uterus?

Do you see any additional findings on higher dose images?

Image A



Image B



Image C

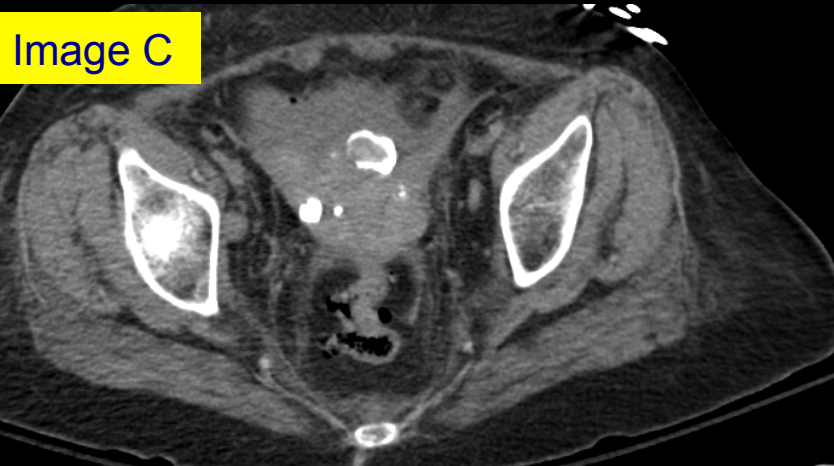


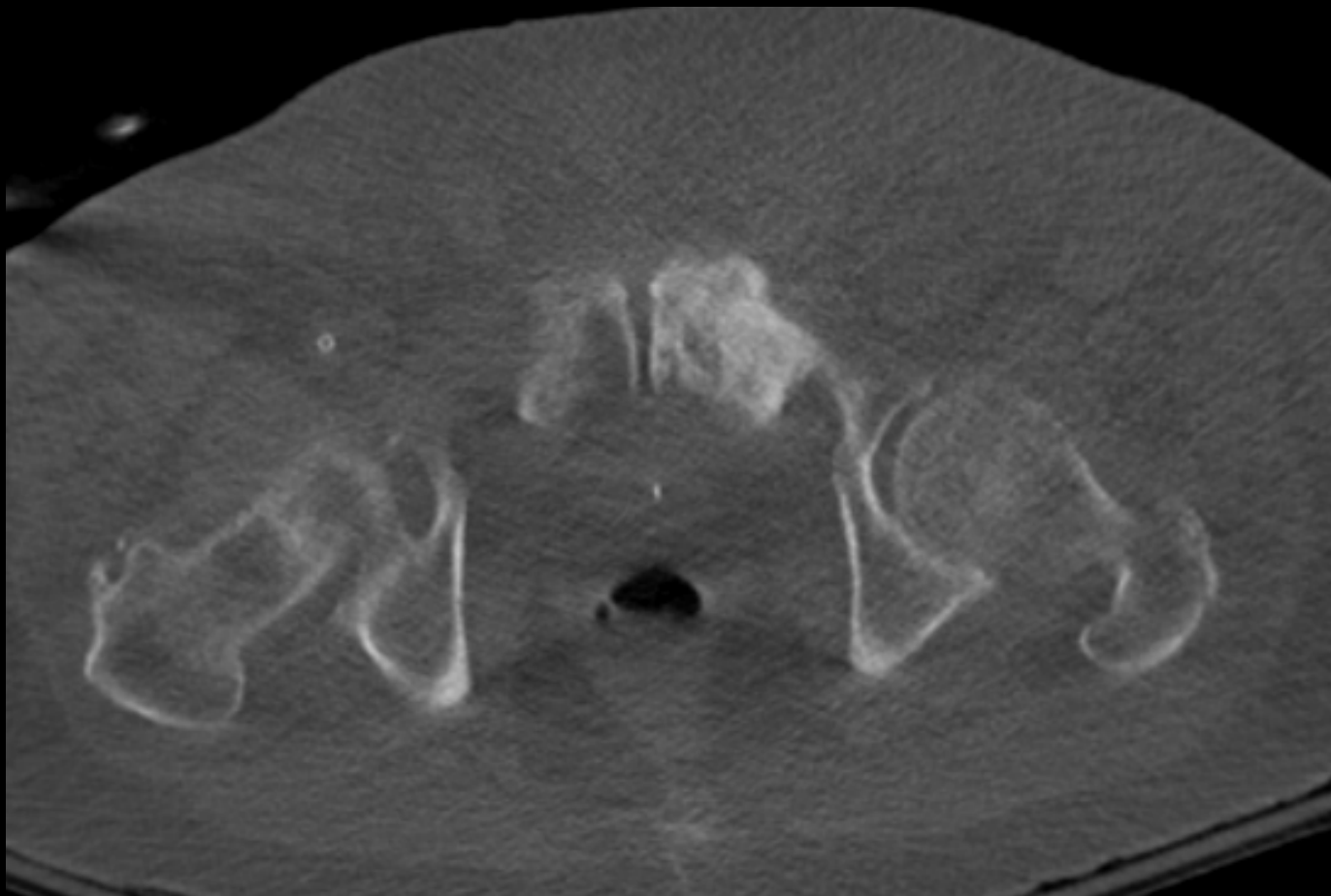
Image D



Calcified uterine fibroid

Image A	Image B	Image C	Image D
120 kVp	120 kVp	120 kVp	120 kVp
200 mAs	150 mAs	100 mAs	50 mAs
CTDIvol: 12 mGy	9 mGy	6 mGy	3 mGy

Do you see any abnormal findings on this axial CT image?





Do you see sclerotic metastasis of left pubic bone?

Do you see any additional findings on higher dose images?

Image A



Image B

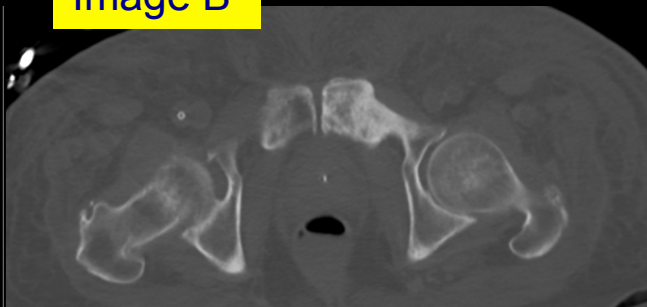


Image C



Image D

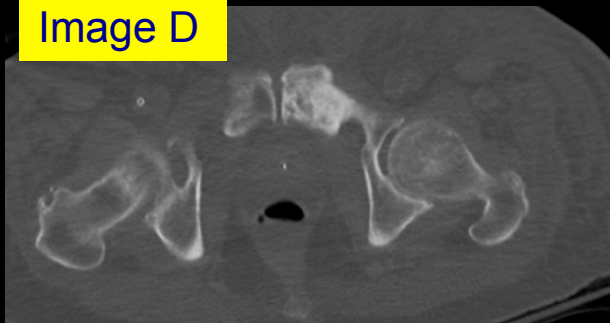


Image E

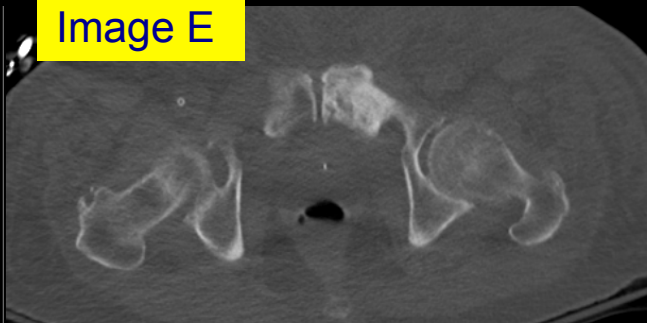
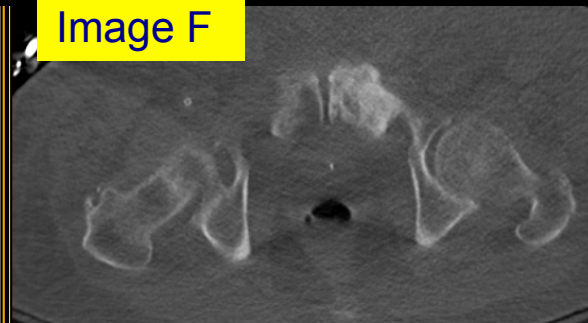


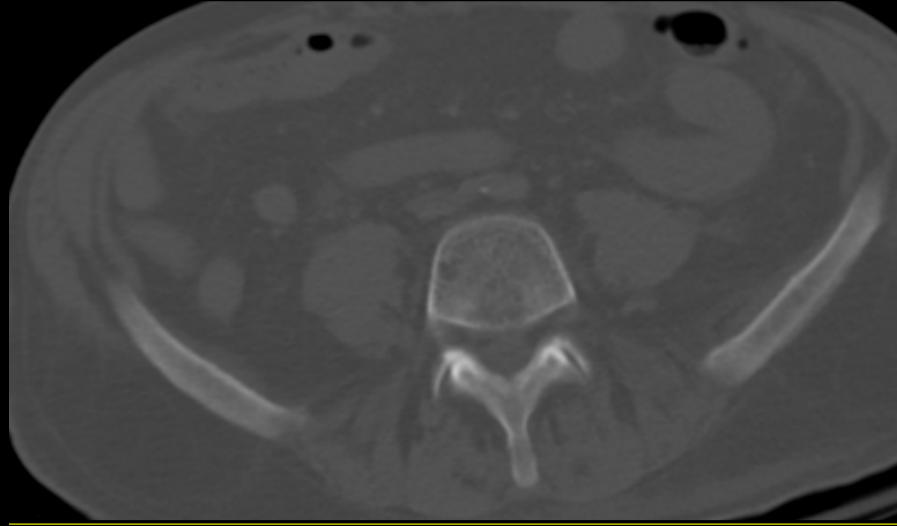
Image F

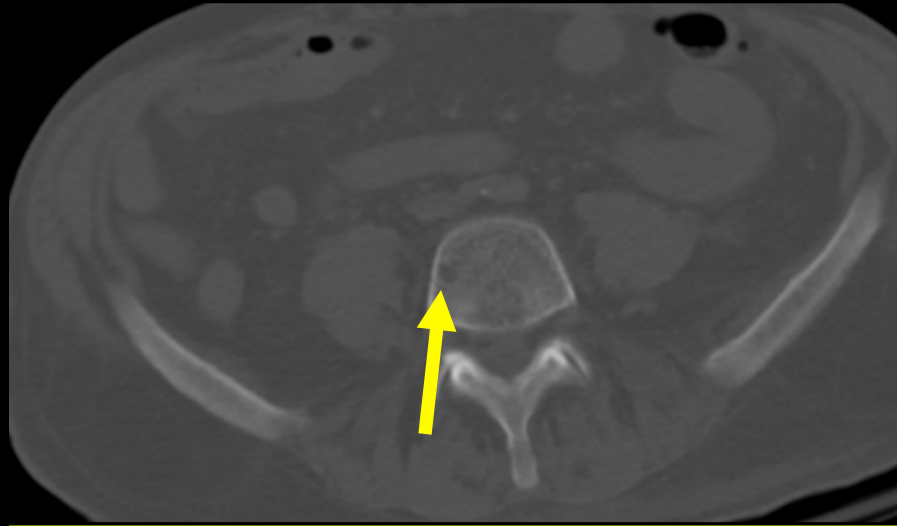


Sclerotic lesion in pubic bone

Image A	Image B	Image C	Image D	Image E	Image F
140 kVp	120 kVp	120 kVp	120 kVp	120 kVp	120 kVp
300 mAs	350 mAs	200 mAs	100 mAs	50 mAs	25 mAs
CTDIvol: 30 mGy	24 mGy	13 mGy	7 mGy	3.4 mGy	1.7 mGy

Do you see any abnormal findings on this transverse CT image?





Do you see lytic lesion of the vertebral body?

Do you see any additional findings on higher dose images?

Image A

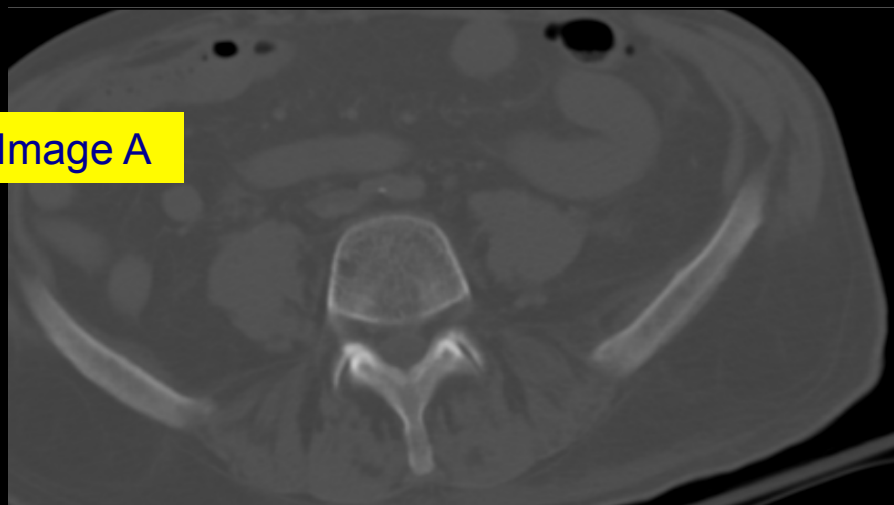


Image B

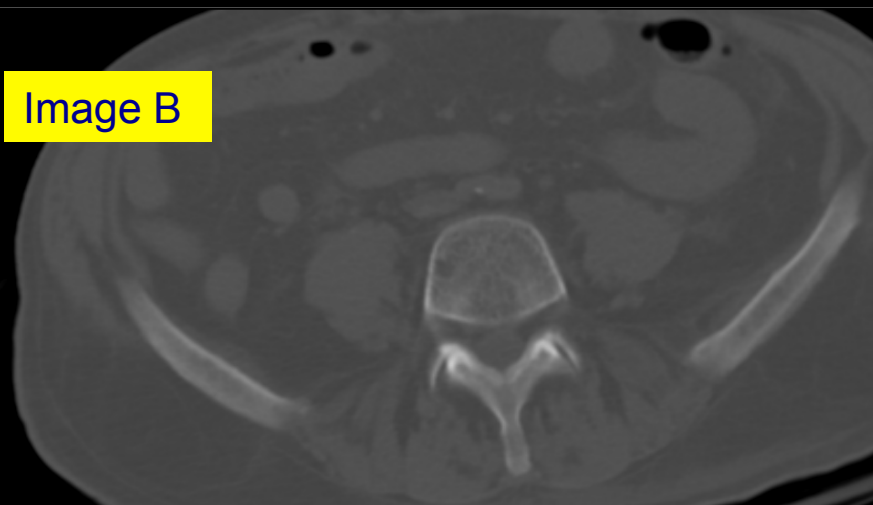


Image C



Image D



Lytic lesion of vertebral body

Image A	Image B	Image C	Image D
120 kVp	120 kVp	120 kVp	120 kVp
200 mAs	150 mAs	100 mAs	50 mAs
CTDIvol: 12 mGy	9 mGy	6 mGy	3 mGy

Do you see any abnormal findings on this transverse CT image?





Do you see left renal low attenuation lesion?

Do you see any additional findings on higher dose images?

Image A

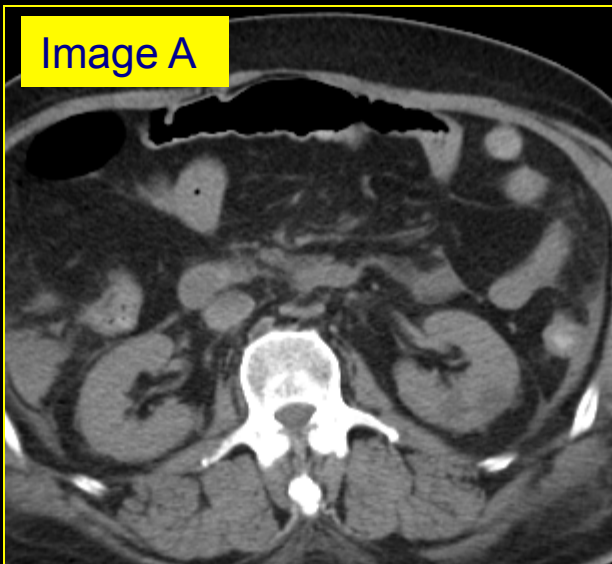


Image B

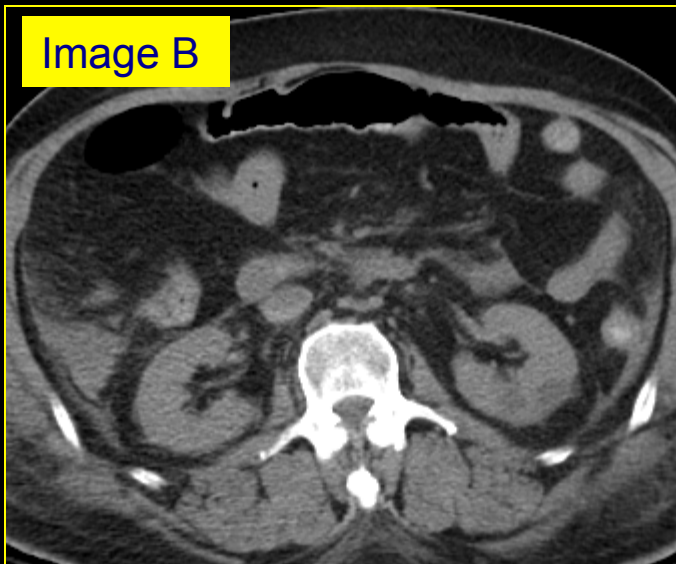


Image C

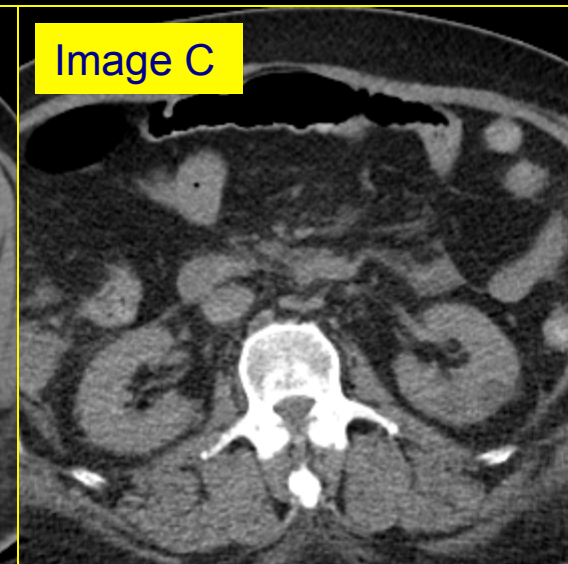


Image D



The image cannot be displayed. Your computer may not have enough memory to open the image, or the image may have been corrupted. Restart your computer, and then open the file again. If the red x still appears, you may have to delete the image and then insert it again.

Low attenuation renal lesion

Image A	Image B	Image C	Image D
120 kVp	120 kVp	120 kVp	120 kVp
352 mAs	200 mAs	100 mAs	50 mAs
CTDIvol: 24 mGy	13 mGy	7 mGy	3 mGy

Do you see any abnormal findings on this transverse CT image?





Do you see multiple low attenuation liver lesions?

Do you see any additional findings on higher dose images?

Image A



Image B



Image C



Image D



Low attenuation liver lesion

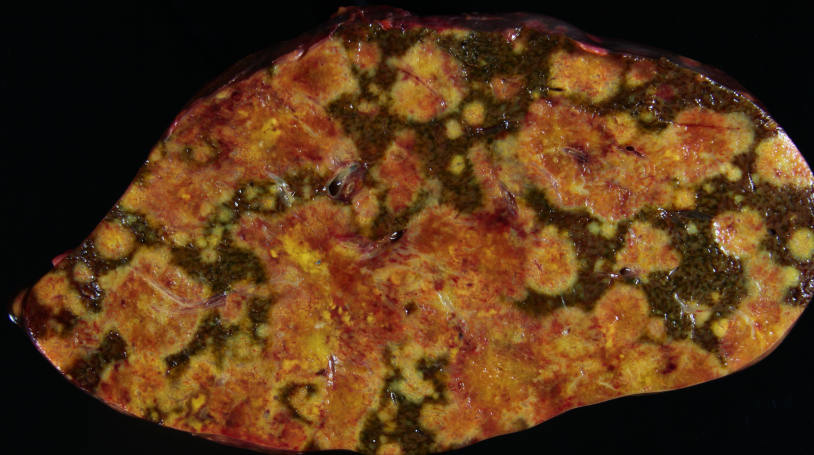


Image A	Image B	Image C	Image D
120 kVp	120 kVp	120 kVp	120 kVp
352 mAs	200 mAs	100 mAs	50 mAs
CTDIvol: 24 mGy	13 mGy	7 mGy	3 mGy

Do you see any abnormal findings on this transverse CT image?





Do you see tiny gall bladder stone?

Do you see any additional findings on higher dose images?

Image A

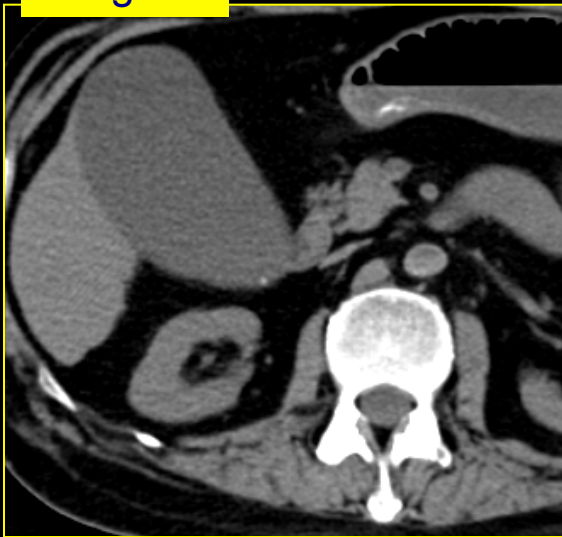


Image B

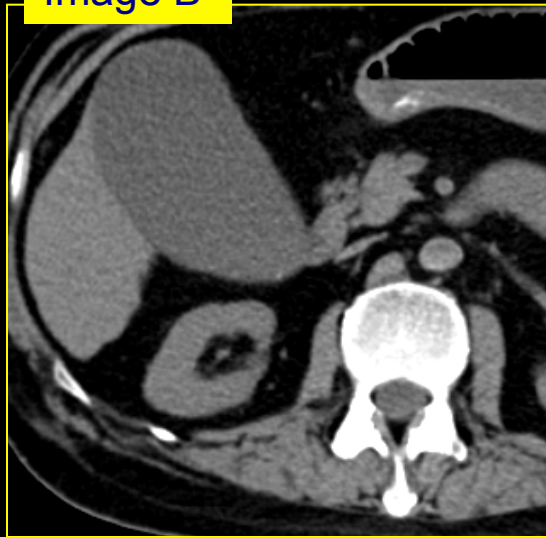


Image C

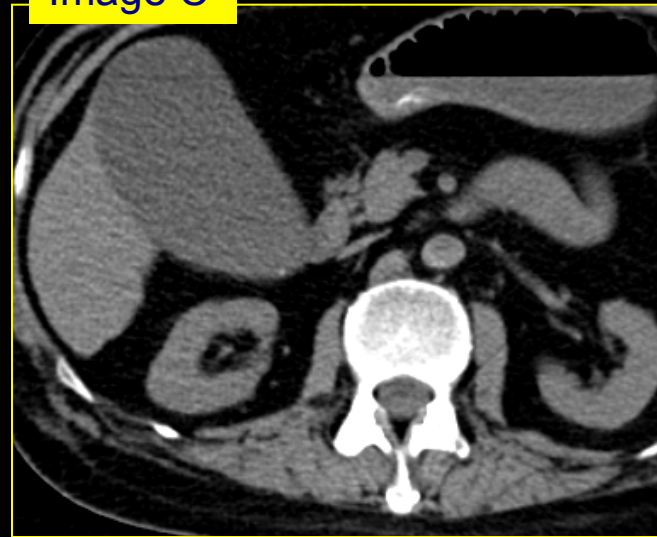


Image D

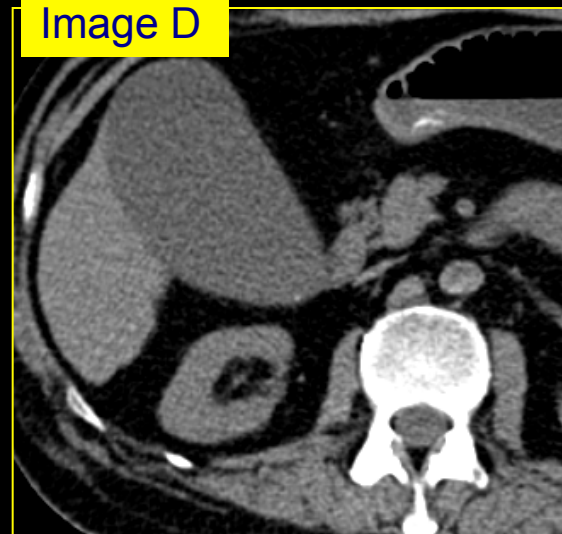
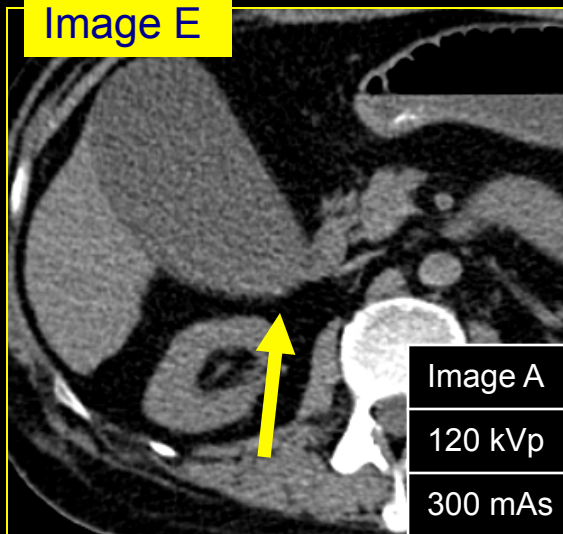


Image E



Tiny gall bladder stone

Image A	Image B	Image C	Image D	Image E
120 kVp	120 kVp	120 kVp	120 kVp	120 kVp
300 mAs	210 mAs	150 mAs	90 mAs	60 mAs
CTDIvol: 21 mGy	14 mGy	10 mGy	6 mGy	4 mGy

Thank You

Please contact for any questions

Sarabjeet Singh, MD: ssingh6@partners.org

Mannudeep K Kalra, MD: mkalra@partners.org